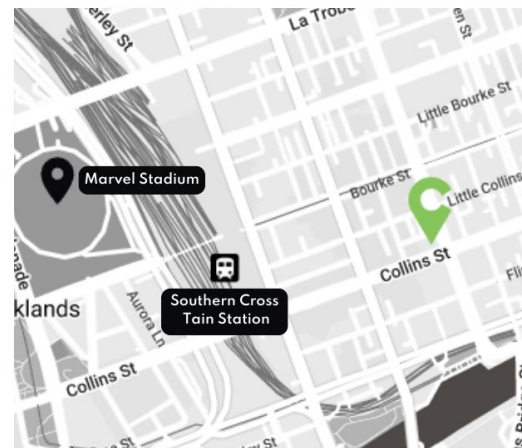
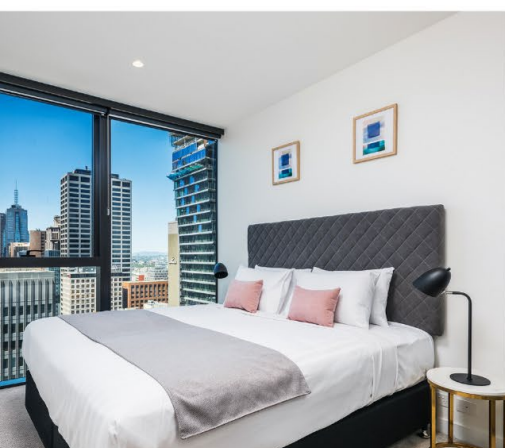


# COLLINS HOUSE

## MELBOURNE



Discover Melbourne's luxury, innovation, and sheer beauty at **Collins House Apartments**. Offers contemporary 1- and 2-Bedroom Apartments in Melbourne, amidst the heart of the CBD, with just a short walk to the city's entertainment, sporting, and business centres.

### Hotel Features

- Complimentary Wi-Fi
- Fully Equipped Gym
- Stunning City Views
- Barbeque Terrace

### Apartment Features

- Spacious 1 & 2-Bedroom Apartments
- Full Kitchen
- Laundry Facilities
- Air Conditioned
- Lounge and Dining Area

### Location

- Central CBD location
- 750m to Crown Casino
- 1km to Southbank Restaurant and Bars
- 1.2km to Federation Square
- 1.3km to Arts Melbourne Centre
- 1.3km to Melbourne Convention & Exhibition Centre
- 2km to Rod Laver Arena

[Click Here for Hotel Information](#)

**Collins House Apartments by CLLIX**  
464 Collins St, Melbourne VIC 3000  
Sales: (07) 3518 4111 | E: [sales@cllix.com](mailto:sales@cllix.com)  
Corporate Reservations: (07) 3051 0059 | E: [corporate.res@cllix.com](mailto:corporate.res@cllix.com)

Hotel Features	Yes	No	Comments
Reception Hours	★		Mon – Fri, 7AM-2AM. Sat, 8AM- 2AM
Swimming Pool		★	
Steam Room		★	
Spa		★	
Sauna		★	
Gymnasium	★		Level 27, 7AM-10PM
Undercover Carpark		★	
Business Facilities		★	
Conference/ Meeting room	★		Prebooked through Reception
Housekeeping	★		Daily for 1-6 Night Stays. Weekly for 7+ Nights Stays
Multilingual Staff		★	
Onsite ATM		★	
All Major Credit Cards Accepted	★		Mastercard, Visa (1.5% services), Amex & Diners (3% services)
Cash Security Deposit		★	
Internet / Wi-Fi	★		

**Note:**

The front of our building has historical design. For security reasons, you may need to call the reception for access.

**Contact No.:** 0473 487 464

Kindly give your contact information to our reservation agent prior to your arrival. (07) 3518 4108

Apartment Features	Yes	No	Comments
Lounge and Dining Area	★		
Spa		★	
Private Balcony		★	
Smoking on Property		★	
Outdoor Furniture		★	
Air Conditioning	★		
Ceiling Fan		★	
Keycard Room Access		★	
In-room Safe		★	
Mini Bar		★	
Direct Dial Phones		★	
International Power Converters		★	
AM/FM Radio Alarm Clock		★	
Hairdryer & Toiletries	★		
Private Bathroom	★		
Kitchen Facilities	Oven, Cooktop, Fridge, Microwave, Tea/Coffee Facilities, Pot, Pans, Plates, Glassware, Silverware		
Laundry Facilities	Washing Machine, Dryer, Iron, and Ironing Board		



Year Property was Built	2019
Year of Last Complete Guest Room Renovation	-
Number of Floors	56 Levels
Property Location	Melbourne CBD
Nearest Major Airport 3-letter Code	MEL

**GDS Codes | Chain Code – GD**

Amadeus	Galileo	Sabre	Worldspan
MELACH	G1034	388370	MELCS

