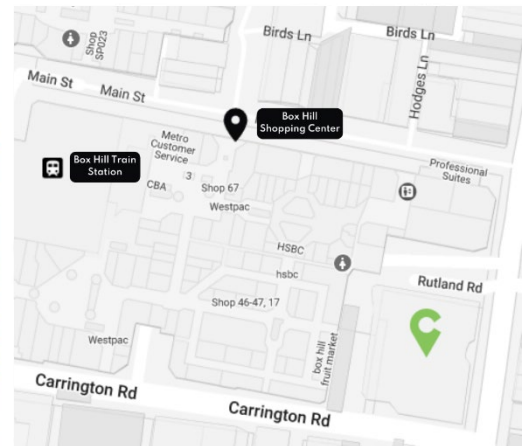
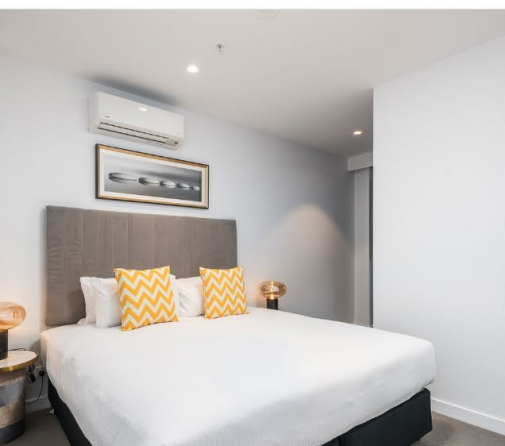




SKY ONE

BOX HILL



With a relaxed and tranquil ambiance, **Sky One Apartments** in Melbourne offer world-class amenities and spectacular views of Melbourne's CBD and surrounding suburbs. Experience a high-end lifestyle in our luxurious 1, 2, or 3-Bedroom Apartment, perfect for your next escape.

Hotel Features

- Complimentary Wi-Fi
- Fully Equipped Gym
- Indoor Heated Swimming Pool
- Heated Spa
- Sauna
- Steam Room
- Barbeque Facilities
- East of the CBD Location

Apartment Features

- Spacious 1, 2 & 3-Bedroom Apartments
- Full Kitchen
- Laundry Facilities
- Air Conditioned
- Lounge and Dining Area
- Spectacular Views
- Private Balcony

Location

- A short walk to Box Hill's best restaurants, cafes, bars, shopping, and entertainment.
- 2-5 min walk to the train station, taxi rank, and bus station.

[Click Here for Hotel Information](#)

Sky One Apartments by CLIX
 545 Station St, Box hill, VIC 3128
 Sales: (07) 3518 4111 | E: sales@clix.com
 Corporate Reservations: (07) 3051 0059 | E: corporate.res@clix.com

Hotel Features	Yes	No	Comments
Reception Hours	★		Mon – Fri, 7AM-10PM. Sat - Sun, 9AM-5:30PM
Swimming Pool	★		Level 3 7 AM - 10 PM
Steam Room	★		Level 3 7 AM - 10 PM
Spa	★		Level 3 7 AM - 10 PM
Sauna	★		Level 3 7 AM - 10 PM
Gymnasium	★		Level 3 7 AM - 10 PM
Undercover Carpark	★		Prebooked through Reception \$20 per night
Business Facilities		★	
Conference/ Meeting room	★		Club Lounge and Theatre
Housekeeping	★		Daily for 1-6 Night Stays. Weekly for 7+ Nights Stays
Multilingual Staff		★	
Onsite ATM		★	
All Major Credit Cards Accepted	★		Mastercard, Visa (1.5% services), Amex & Diners (3% services)
Cash Security Deposit		★	
Internet / Wi-Fi	★		

Apartment Features	Yes	No	Comments
Lounge and Dining Area	★		
Spa	★		
Private Balcony	★		
Smoking on Property		★	
Outdoor Furniture	★		
Air Conditioning	★		
Ceiling Fan		★	
Keycard Room Access		★	
In-room Safe		★	
Mini Bar		★	
Direct Dial Phones		★	
International Power Converters		★	
AM/FM Radio Alarm Clock		★	
Hairdryer & Toiletries	★		
Private Bathroom	★		
Kitchen Facilities	Oven, Cooktop, Fridge, Microwave, Tea/Coffee Facilities, Pot, Pans, Plates, Glassware, Silverware		
Laundry Facilities	Washing Machine, Dryer, Iron, and Ironing Board		

Year Property was Built	2019
Year of Last Complete Guest Room Renovation	-
Number of Floors	35
Property Location	East of the CBD
Nearest Major Airport 3-letter Code	MEL

GDS Codes | Chain Code – GD

Amadeus	Galileo	Sabre	Worldspan
MELASB	F9717	386621	MELAS

