

CLLIX[®]

APARTMENTS AND HOTELS



Brisbane CBD

[Brisbane Skytower by CLLIX](#)

Spire Residences by CLLIX – Opening June

CLLIX Brisbane Central Apartments – Coming Soon

Brisbane Southbank

[Arena Apartments by CLLIX](#)

[Atlas Apartments by CLLIX](#)

[Soda Apartments by CLLIX](#)

[Ivy and Eve Apartments by CLLIX](#)

[Hope Street Apartments by CLLIX](#)

[Brisbane One Apartments by CLLIX](#)

Fortitude Valley

[Fortitude Valley Apartments by CLLIX](#)

Woolloongabba

[Trafalgar Lane Apartments by CLLIX](#)

Melbourne

[CLLIX Australia 108 Apartments](#)

[Collins House Apartments by CLLIX](#)

[The Eminence Apartments by CLLIX](#)

[Sky One Apartments by CLLIX](#)

[Paragon Apartments by CLLIX](#)

Gold Coast

[Ruby Gold Coast by CLLIX](#)

[Marine Quarter Apartments by CLLIX](#)


Sunshine Coast


[The Hedge Apartments by CLLIX](#)

Adelaide

[Realm Apartments by CLLIX](#)

The Cullinan Apartments by CLLIX- Coming Soon

 [Click Here for Property Video](#)

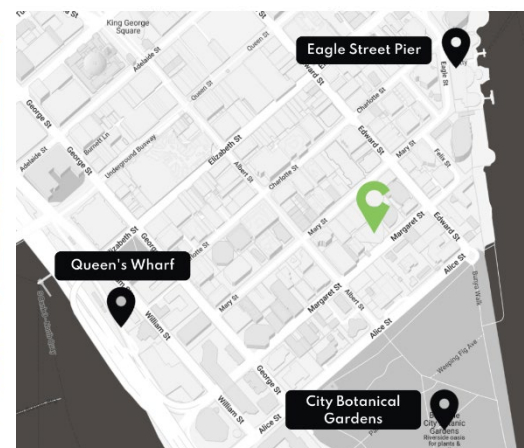
 [Click Here for Property Map](#)

CLLIX APARTMENTS AND HOTELS

Level 22, 110 Mary Street, Brisbane City QLD 4000

Sales: (07) 3518 4111 | E: sales@cllix.com

Corporate Reservations: (07) 3051 0059 | E: corporate.res@cllix.com



Step into the life of premier living at **Brisbane Skytower** with breathtaking view lines stretching from the river to the city and beyond. A new level of luxury 1, 2, and 3-bedroom fully self-contained apartments await to deliver the comforts of home. A short walk from Brisbane's best restaurants on Eagle Street Pier and Queen Street Mall, City Botanical Gardens, and entertainment districts

Hotel Features

- Complimentary Wi-fi
- Fully Equipped Gym
- Undercover Parking
- Indoor Swimming Pool
- River or City Views
- Steam Room
- Barbeque Facilities
- Located in the middle of Brisbane's CBD

Apartment Features

- Spacious 1,2 and 3-Bedroom Apartments
- Full Kitchen
- Laundry Facilities
- Air Conditioned

Location

- Located on Margaret St in the Brisbane CBD
- Near City Botanic Gardens
- 550m to Queen St Mall in Brisbane CBD
- 1.6km to Brisbane Convention & Exhibition Centre (BCEC)
- 2km to Gallery of Modern Art (GOMA)
- 2.5km to Suncorp Stadium

[Click Here for Hotel Information](#)

Brisbane Skytower by CLLIX
 222 Margaret Street, Brisbane City 4000, Queensland
 Sales: (07) 3518 4111 | E: sales@cllix.com
 Corporate Reservations: (07) 3051 0059 | E: corporate.res@cllix.com

Hotel Features	Yes	No	Comments
Reception Hours	★		Mon – Sun, Open 24 Hours
Swimming pool	★		Level 40 & 66, 5 am-10 pm
Steam Room	★		Level 66, 5 am-10 pm
Gymnasium	★		Level 40 & 66, 5 am-10 pm
Café and Bar		★	
Vending Machine	★		
Room Service		★	
Undercover Carpark	★		Charges Apply \$35 per night
Business Facilities		★	
Housekeeping	★		Daily for 1-6 Night Stays.* Weekly for 7+ Nights Stays
Multilingual Staff	★		Chinese
Car rental		★	Located on Albert St.
Onsite ATM		★	
All Major Credit Cards Accepted	★		Mastercard, Visa (1.5% services), Amex & Diners (3% services)
Cash Security Deposit		★	
Internet / Wi-Fi	★		

*Exclusive for negotiated contracted corporate accounts.

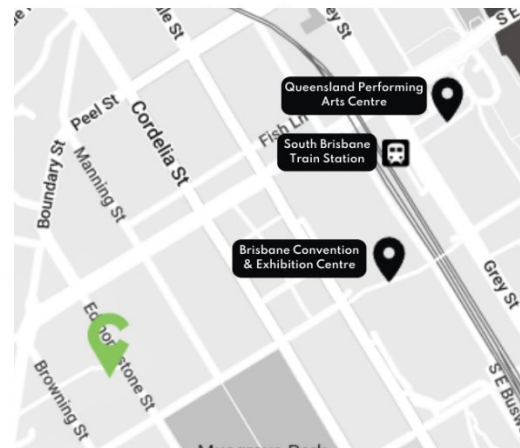
Apartment Features	Yes	No	Comments
Lounge and Dining Area	★		
Private Balcony		★	
Smoking on Property		★	
Air Conditioning	★		
Ceiling Fan		★	
Keycard Room Access	★	★	Some Units Have Physical Keys
In-room Safe		★	
Mini Bar		★	
Direct Dial Phones		★	
International Power Converters		★	
AM/FM Radio Alarm Clock		★	
Hairdryer & Toiletries	★		
Private Bathroom	★		
Kitchen Facilities	Oven, Cooktop, Fridge, Microwave, Tea/Coffee Facilities, Pot, Pans, Plates, Glassware, Silverware		
Laundry Facilities	Washing Machine, Dryer, Iron, and Ironing Board		

Year Property was built	2019
Year of Last Complete Guest Room Renovation	-
Number of Floors	90
Property Location	CBD
Nearest Major Airport 3-letter Code	BNE

GDS Codes | Chain Code – GD

Amadeus	Galileo	Sabre	Worldspan
BNEBSR	E0901	316832	BNEBS





Nestled between South Bank Parklands and the West End, **Arena Apartments** boasts of the ultimate luxury serviced apartments in Brisbane CBD. We offer oversized, fully self-contained One, Two, and Three- Bedroom Apartments. The apartment is a step away from some of the city's best bars and restaurants, as well as a variety of preloved and boutique stores.

Hotel Features

- Complimentary Wi-Fi
- Fully Equipped Gym
- Undercover Parking
- Outdoor Swimming Pool
- Barbeque Facilities

Apartment Features

- Spacious 1,2 and 3-Bedroom Apartments
- Full Kitchen
- Laundry Facilities
- Air Conditioned
- Private Balcony

Location

- 450m to Brisbane Convention & Exhibition Centre (BCEC)
- 1km to Gallery of Modern Art (GOMA)
- 1.5km to Queen St Mall in Brisbane CBD
- 2.5km to Suncorp Stadium and City Botanic Gardens

[Click Here for Hotel Information](#)

Arena Apartments by CLLIX
 9 Edmondstone St, South Brisbane QLD 4101
 Sales: (07) 3518 4111 | E: sales@cllix.com
 Corporate Reservations: (07) 3051 0059 | E: corporate.res@cllix.com

Hotel Features	Yes	No	Comments
Self Check-in Kiosk	★		
Reception Hours	★		Sun – Fri, 9 AM- 5PM. Sat, 8AM- 5PM.
Swimming Pool	★		Ground Level, 7AM- 9:30PM
Gymnasium	★		Ground Level, 5AM- 9:30PM
Undercover Carpark	★		1 Complimentary Car Space if Booked Direct*
Conference/ Meeting Room		★	
Housekeeping	★		Daily for 1-6 Night Stays.* Weekly for 7+ Nights Stays
Multilingual Staff		★	
Onsite ATM		★	
All Major Credit Cards Accepted	★		Mastercard, Visa (1.5% services), Amex & Diners (3% services)
Cash Security Deposit		★	
Internet / Wi-Fi	★		

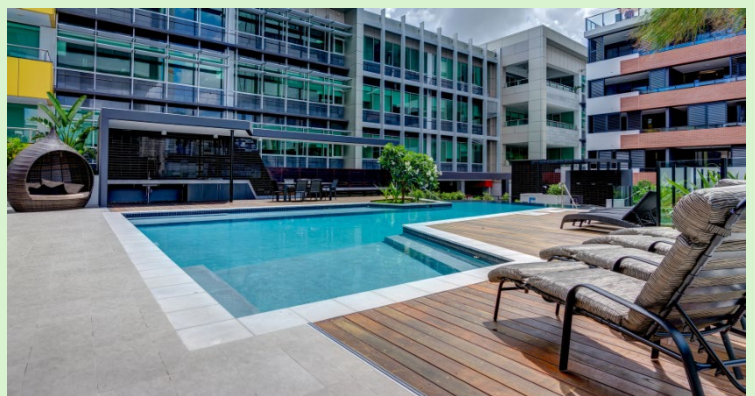
*Exclusive for negotiated contracted corporate accounts.

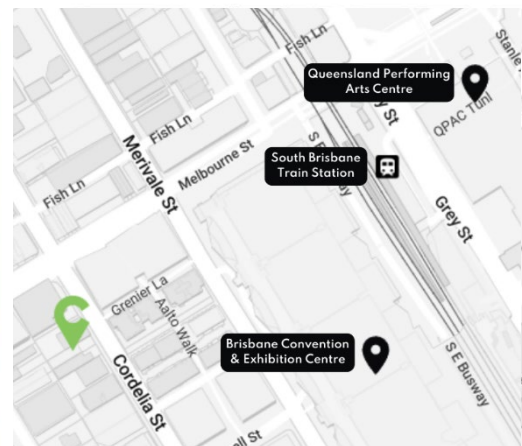
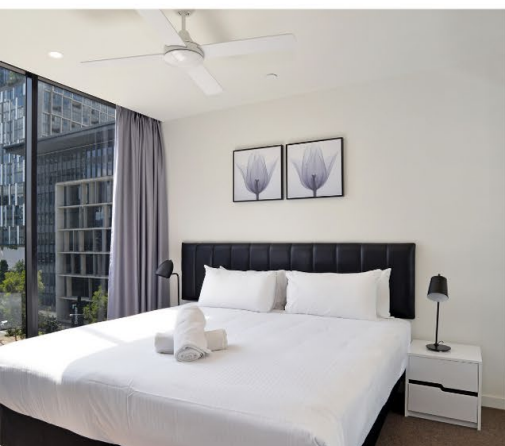
Apartment Features	Yes	No	Comments
Lounge and Dining Area	★		
Private Balcony	★		
Smoking on Property		★	
Air Conditioning	★		
Ceiling Fan		★	
Keycard Room Access		★	Physical keys
In-room Safe		★	
Mini Bar		★	
Direct Dial Phones		★	
International Power Converters		★	
Hairdryer & Toiletries	★		
Private Bathroom	★		
Kitchen Facilities	Oven, Cooktop, Fridge, Microwave, Tea/Coffee Facilities, Pot, Pans, Plates, Glassware, Silverware		
Laundry Facilities	Washing Machine, Dryer, Iron, and Ironing Board		

Year Property was Built	2014
Year of Last Complete Guest Room Renovation	-
Number of Floors	2 Towers, 11 Levels
Property Location	Brisbane South Bank
Nearest Major Airport 3-letter Code	BNE

GDS Codes | Chain Code – GD

Amadeus	Galileo	Sabre	Worldspan
BNEAPT	C6117	307614	BNEAP





Located in South Brisbane, 200m from Brisbane Convention and Exhibition Centre, and 500m from Queensland Performing Arts Complex, **Atlas Apartments** combine luxury accommodation with superb world-class facilities in an unbeatable location.

Hotel Features

- Complimentary Wi-Fi
- Fully Equipped Gym
- Undercover Parking
- Outdoor Swimming Pool
- Steam Room
- Sun Deck
- Barbeque Facilities

Apartment Features

- Spacious 1,2 and 3Bedroom Apartments
- Full Kitchen
- Laundry Facilities
- Air Conditioning
- Private Balcony

Location

- 200m to Brisbane Convention & Exhibition Centre (BCEC)
- 500m to Gallery of Modern Art (GOMA)
- 1km to Queen St Mall in Brisbane CBD
- 1.7km to Suncorp Stadium
- 1.6km City Botanic Gardens

[Click Here for Hotel Information](#)

Atlas Apartments by CLIX
 39 Cordelia Street, South Brisbane 4101, Queensland
 Sales: (07) 3518 4111 | E: sales@clix.com
 Corporate Reservations: (07) 3051 0059 | E: corporate.res@clix.com

Hotel Features	Yes	No	Comments
Reception Hours	★	Mon– Fri, 8.30AM- 5PM. Sat– Sun, 9AM- 4PM. After Hours Check in call (07) 3844 8848	
Swimming Pool	★		Level 3 Podium, 6AM-10PM
Steam Room	★		Level 3 Podium, 6AM-10PM
Spa		★	
Sauna		★	
Gymnasium	★		Level 3 Podium, 6AM-10PM
Undercover Carpark	★		1 Complimentary Car Space if Booked Direct*
Business Facilities		★	
Conference/ Meeting room		★	
Housekeeping	★		Daily for 1-6 Night Stays.* Weekly for 7+ Nights Stays
Multilingual Staff	★		Chinese
Onsite ATM		★	
All Major Credit Cards Accepted	★		Mastercard, Visa (1.5% services), Amex & Diners (3% services)
Cash Security Deposit		★	
Internet / Wi-Fi	★		

*Exclusive for negotiated contracted corporate accounts.

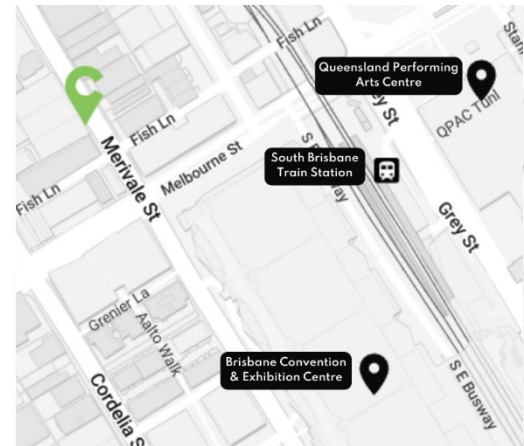
Apartment Features	Yes	No	Comments
Lounge and Dining Area	★		
Spa		★	
Private Balcony	★		
Smoking on Property		★	
Outdoor Furniture	★		
Air Conditioning	★		
Ceiling Fan	★		
Keycard Room Access		★	
In-room Safe		★	
Mini Bar		★	
Direct Dial Phones		★	
International Power Converters		★	
AM/FM Radio Alarm Clock		★	
Hairdryer & Toiletries	★		
Private Bathroom	★		
Kitchen Facilities	Oven, Cooktop, Fridge, Microwave, Tea/Coffee Facilities, Pot, Pans, Plates, Glassware, Silverware		
Laundry Facilities	Washing Machine, Dryer, Iron, and Ironing Board		

Year Property was Built	2019
Year of Last Complete Guest Room Renovation	-
Number of Floors	2 Towers, 15 Levels
Property Location	Brisbane South Bank
Nearest Major Airport 3-letter Code	BNE

GDS Codes | Chain Code – GD

Amadeus	Galileo	Sabre	Worldspan
BNEATL	F3814	326769	BNEAT





The ultimate South Brisbane accommodation, **Ivy & Eve Apartments** in Brisbane offers two towers of modern and spacious self-contained apartments. With its resort-style atmosphere and outstanding facilities including a dedicated recreational deck overlooking the Brisbane CBD, you'll never want to leave.

Hotel Features

- Complimentary Wi-Fi
- Fully Equipped Gym
- Undercover Parking
- Outdoor Swimming Pool
- Heated Spa
- Barbeque Facilities • TV / Lounge Room (Beach House Function Room)

Apartment Features

- Spacious 1,2 and 3Bedroom Apartments
- Full Kitchen
- Laundry Facilities
- Air Conditioned
- Private Balcony
- Lounge and Dining Area

Location

- 90m to Brisbane Convention & Exhibition Centre (BCEC)
- 550m to Gallery of Modern Art (GOMA)
- 1km to Queen St Mall in Brisbane CBD
- 1.5km to Suncorp Stadium
- 1.4km City Botanic Gardens

[Click Here for Hotel Information](#)

Ivy & Eve Apartments by CLLIX
 2-28 Merivale St, South Brisbane QLD 4101
 Sales: (07) 3518 4111 | E: sales@cllix.com
 Corporate Reservations: (07) 3051 0059 | E: corporate.res@cllix.com

Hotel Features	Yes	No	Comments
Reception Hours	★		Mon – Sun, 8AM- 8PM
Swimming Pool	★		Level 5, 7AM-10PM
Steam Room		★	
Spa	★		Level 5, 7AM-10PM
Sauna		★	
Gymnasium	★		Level 5, 7AM-10PM
Room Service		★	
Undercover Carpark	★		1 Complimentary Car Space if Booked Direct*
Business Facilities		★	
Conference/ Meeting room	★		
Housekeeping	★		Daily for 1-6 Night Stays.* Weekly for 7+ Nights Stays
Multilingual Staff	★		Chinese
Onsite ATM		★	
All Major Credit Cards Accepted	★		Mastercard, Visa (1.5% services), Amex & Diners (3% services)
Cash Security Deposit		★	
Internet / Wi-Fi	★		

*Exclusive for negotiated contracted corporate accounts.

Apartment Features	Yes	No	Comments
Lounge and Dining Area	★		
Spa		★	
Private Balcony	★		
Smoking on Property		★	
Outdoor Furniture	★		
Air Conditioning	★		
Ceiling Fan		★	
Keycard Room Access		★	
In-room Safe		★	
Mini Bar		★	
Direct Dial Phones		★	
International Power Converters		★	
AM/FM Radio Alarm Clock		★	
Hairdryer & Toiletries	★		
Private Bathroom	★		
Kitchen Facilities	Oven, Cooktop, Fridge, Microwave, Tea/Coffee Facilities, Pot, Pans, Plates, Glassware, Silverware		
Laundry Facilities	Washing Machine, Dryer, Iron, and Ironing Board		

Year Property was Built	2018
Year of Last Complete Guest Room Renovation	-
Number of Floors	2 Towers, 30 Levels
Property Location	Brisbane South Bank
Nearest Major Airport 3-letter Code	BNE

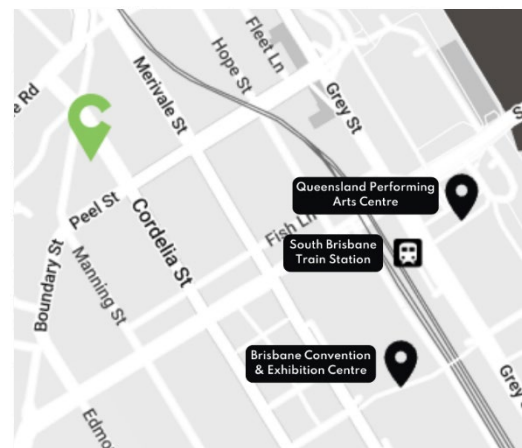
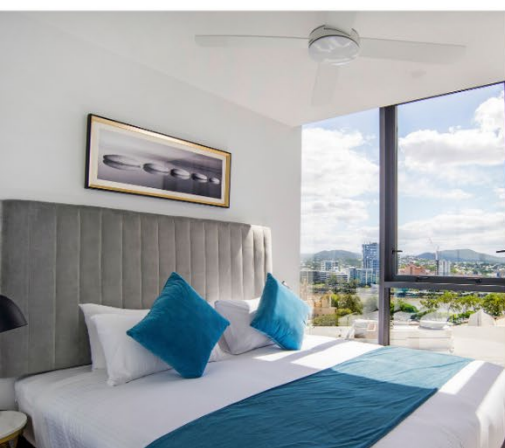
GDS Codes | Chain Code – GD

Amadeus	Galileo	Sabre	Worldspan
BNEIAE	F3319	326347	BNEIV





BRISBANE 1 SOUTH BRISBANE



Located right in the heart of South Brisbane, our artfully designed apartments in Brisbane boast world-class amenities, amidst a prime location. Whether you're after a swim in the pool or simply wish to relax in the rooftop recreation area, **Brisbane One Apartments** offers premier living at its best.

Hotel Features

- Complimentary Wi-Fi
- Fully Equipped Gym
- Undercover Parking
- Heated Swimming Pool
- Beautiful River or City Views
- Sauna and Spa
- Club Room
- Garden Lounge

Apartment Features

- Spacious 1,2 and 3-Bedroom Apartments
- Full Kitchen
- Laundry Facilities
- Air Conditioned
- Lounge and Dining Area
- Spectacular Views
- Private Balcony

Location

- 400m to Brisbane Convention & Exhibition Centre (BCEC)
- 550m to Gallery of Modern Art (GOMA)
- 1.5km to Queen St Mall in Brisbane CBD
- 2km to Suncorp Stadium

[Click Here for Hotel Information](#)

Brisbane One Apartments by CLIX
 1 Cordelia Street, South Brisbane, QLD, 4101
 Sales: (07) 3518 4111 | E: sales@clix.com
 Corporate Reservations: (07) 3051 0059 | E: corporate.res@clix.com

Hotel Features	Yes	No	Comments
Reception Hours	★	Mon – Sun, 8AM- 8PM. For After Hours Check-in, Contact (07) 3255 0889	
Swimming Pool	★		Level 7, 7AM-10PM
Steam Room		★	
Spa	★		Tower 2 Level18, 7AM-10PM
Sauna	★		Level 7, 7AM-10PM
Gymnasium	★		Tower 2 Level 7, 7AM-10PM
Undercover Carpark	★		1 Complimentary Car Space if Booked Direct* N/A for Studio Rooms
Business Facilities		★	
Conference/ Meeting room	★		
Housekeeping	★		Daily for 1-6 Night Stays.* Weekly for 7+ Nights Stays
Multilingual Staff		★	
Onsite ATM		★	
All Major Credit Cards Accepted	★		Mastercard, Visa (1.5% services), Amex & Diners (3% services)
Cash Security Deposit		★	
Internet / Wi-Fi	★		

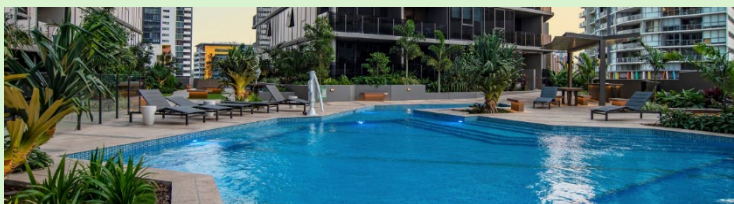
**Exclusive for negotiated contracted corporate accounts.*

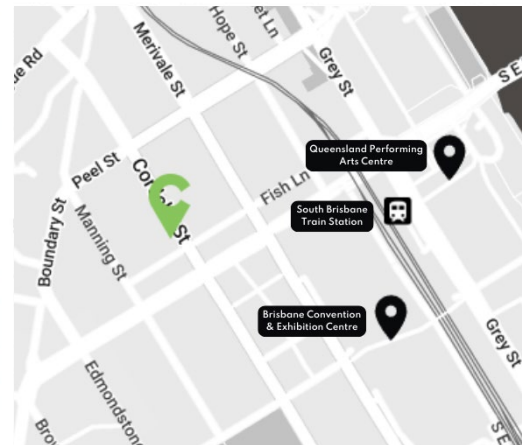
Apartment Features	Yes	No	Comments
Lounge and Dining Area	★		
Spa		★	
Private Balcony	★		
Smoking on Property		★	
Outdoor Furniture	★		
Air Conditioning	★		
Ceiling Fan	★		
Keycard Room Access		★	
In-room Safe		★	
Mini Bar		★	
Direct Dial Phones		★	
International Power Converters		★	
AM/FM Radio Alarm Clock		★	
Hairdryer & Toiletries	★		
Private Bathroom	★		
Kitchen Facilities	Oven, Cooktop, Fridge, Microwave, Tea/Coffee Facilities, Pot, Pans, Plates, Glassware, Silverware		
Laundry Facilities	Washing Machine, Dryer, Iron, and Ironing Board		

Year Property was Built	2019
Year of Last Complete Guest Room Renovation	-
Number of Floors	3 Towers, 34 Levels
Property Location	Brisbane South Bank
Nearest Major Airport 3-letter Code	BNE

GDS Codes | Chain Code – GD

Amadeus	Galileo	Sabre	Worldspan
BNEABE	F7042	380501	BNEBO





Discover an enticing blend of Brisbane's big city luxurious living fused with the spirit of South Bank's alfresco culture. **Soda Apartments**, the best place to stay in Brisbane offers a variety of self-contained apartments combined with a sensational rooftop pool deck that delivers 360° city views.

Hotel Features

- Complimentary Wi-Fi
- Fully Equipped Gym
- Undercover Parking
- Outdoor Swimming Pool
- Beautiful River and City Views

Apartment Features

- Spacious 1,2 and 3-Bedroom Apartments
- Full Kitchen
- Laundry Facilities
- Air Conditioned
- Private Balcony with spectacular

Location

- 180m to Brisbane Convention & Exhibition Centre (BCEC)
- 700m to Gallery of Modern Art (GOMA)
- 1.2km to Queen St Mall in Brisbane CBD
- 2.5km to Suncorp Stadium
- 3.2km City Botanic Gardens

[Click Here for Hotel Information](#)

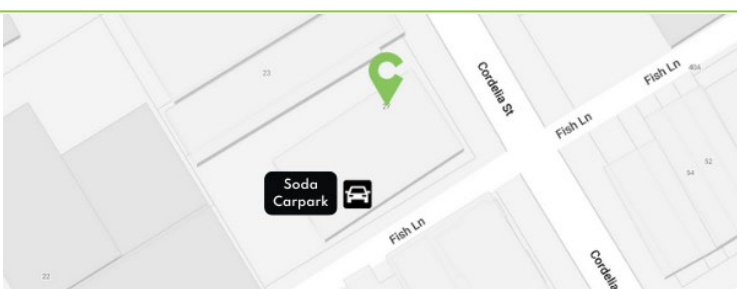
Soda Apartments by CLIX
 27 Cordelia Street, South Brisbane QLD 4101
 Sales: (07) 3518 4111 | E: sales@clix.com
 Corporate Reservations: (07) 3051 0059 | E: corporate.res@clix.com

Hotel Features	Yes	No	Comments
Reception Hours	★	Mon – Sun, 8:30AM- 5PM. For After Hours Call (07) 3518 4108	
Swimming Pool	★		Rooftop, 7AM-10PM
Steam Room		★	
Spa		★	
Sauna		★	
Gymnasium	★		Level 2, Open 24/27
Undercover Carpark	★		1 Complimentary Car Space if Booked Direct*
Business Facilities		★	
Conference/ Meeting room		★	
Housekeeping	★		Daily for 1-6 Night Stay.* Weekly for 7+ Nights Stays
Multilingual Staff		★	
Onsite ATM		★	
All Major Credit Cards Accepted	★		Mastercard, Visa (1.5% services), Amex & Diners (3% services)
Cash Security Deposit		★	
Internet / Wi-Fi	★		

*Exclusive for negotiated contracted corporate accounts.

Note:

You can access the on-site car park at **72 Fish Lane**. When you arrive, there is an intercom with instructions on contacting reception, please follow these instructions, and we will provide you with your allocated car park number and open the gate for you.

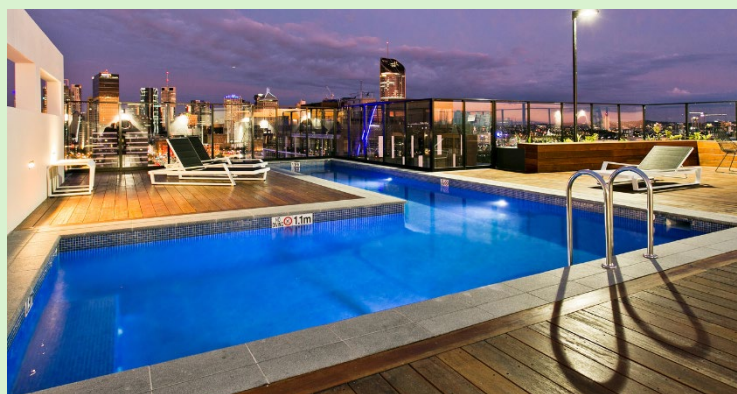


Year Property was Built	2016
Year of Last Complete Guest Room Renovation	-
Number of Floors	20 Levels
Property Location	Brisbane South Bank
Nearest Major Airport 3-letter Code	BNE

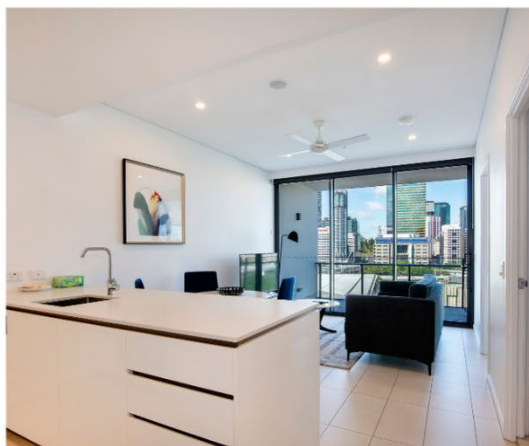
GDS Codes | Chain Code – GD

Amadeus	Galileo	Sabre	Worldspan
BNESAP	D4142	484569	BNESA

Apartment Features	Yes	No	Comments
Lounge and Dining Area	★		
Spa		★	
Private Balcony	★		
Smoking on Property		★	
Outdoor Furniture	★		
Air Conditioning	★		
Ceiling Fan	★		
Keycard Room Access	★		
In-room Safe		★	
Mini Bar		★	
Direct Dial Phones		★	
International Power Converters		★	
AM/FM Radio Alarm Clock		★	
Hairdryer & Toiletries	★		
Private Bathroom	★		
Kitchen Facilities	Oven, Cooktop, Fridge, Microwave, Tea/Coffee Facilities, Pot, Pans, Plates, Glassware, Silverware		
Laundry Facilities	Washing Machine, Dryer, Iron, and Ironing Board		



Hope Street Apartments



The ultimate South Brisbane accommodation, **Hope Street Apartments** in Brisbane offers modern and spacious self-contained apartments. Designed to offer the ultimate in lifestyle accommodation, Hope Street apartments in Brisbane embodies the spirit of inner-city living. With a host of beautifully appointed leisure facilities, together with a range of luxury apartments, you'll never want to leave.

Hotel Features

- Complimentary Wi-Fi
- Fully Equipped Gym
- Undercover Parking
- Swimming Pool
- Beautiful River or City Views
- Sauna and Spa
- Express Check-Out

Apartment Features

- Spacious 1,2 and 3Bedroom Apartments
- Full Kitchen
- Laundry Facilities
- Air Conditioned
- Lounge and Dining Area
- Spectacular Views
- Private Balcony

Location

- 350m to Gallery of Modern Art (GOMA)
- 500m to Brisbane Convention & Exhibition Centre (BCEC)
- 1.2km to Queen St Mall in Brisbane CBD
- 2km to Suncorp Stadium and City Botanic Gardens

[Click Here for Hotel Information](#)

Hope Street Apartments by CLLIX

19 Hope Street, South Brisbane 4101, Queensland

Sales: (07) 3518 4111 | E: sales@cllix.com

Corporate Reservations: (07) 3051 0059 | E: corporate.res@cllix.com

Hotel Features	Yes	No	Comments
Reception Hours	★	Mon – Fri, 8:30AM- 5PM. Sat – Sun, 9AM- 5PM After Hours Call (07) 3518 4108	
Swimming Pool	★		Level 4, 6AM-10PM
Steam Room		★	
Spa	★		Level 4, 6AM-10PM
Sauna	★		Level 4, 6AM-10PM
Gymnasium	★		Level 4, 6AM-10PM
Undercover Carpark	★		1 Complimentary Car Space if Booked Direct*
Business Facilities		★	
Conference/ Meeting room	★		Level 5, Partially Outdoor (Book at Reception)
Housekeeping	★		Daily for 1-6 Night Stays.* Weekly for 7+ Nights Stays
Multilingual Staff		★	
Onsite ATM		★	
All Major Credit Cards Accepted	★		Mastercard, Visa (1.5% services), Amex & Diners (3% services)
Cash Security Deposit		★	
Internet / Wi-Fi	★		

**Exclusive for negotiated contracted corporate accounts.*

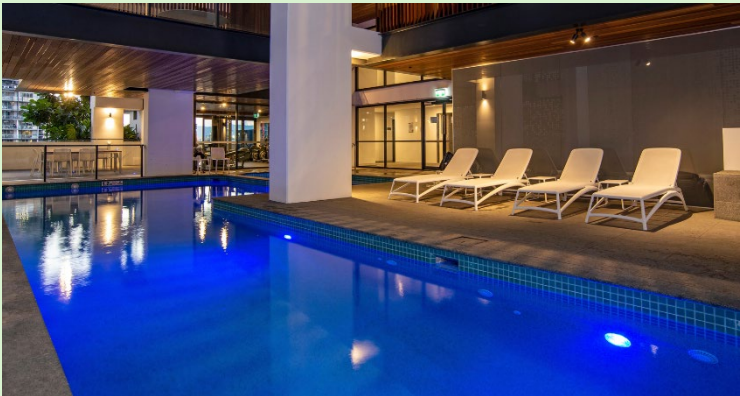
Apartment Features	Yes	No	Comments
Lounge and Dining Area	★		
Spa		★	
Private Balcony	★		
Smoking on Property		★	
Outdoor Furniture	★		
Air Conditioning	★		
Ceiling Fan	★		
Keycard Room Access		★	
In-room Safe		★	
Mini Bar		★	
Direct Dial Phones		★	
International Power Converters		★	
AM/FM Radio Alarm Clock		★	
Hairdryer & Toiletries	★		
Private Bathroom	★		
Kitchen Facilities	Oven, Cooktop, Fridge, Microwave, Tea/Coffee Facilities, Pot, Pans, Plates, Glassware, Silverware		
Laundry Facilities	Washing Machine, Dryer, Iron, and Ironing Board		

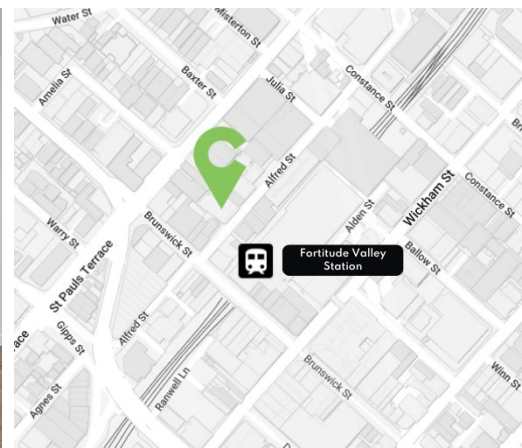
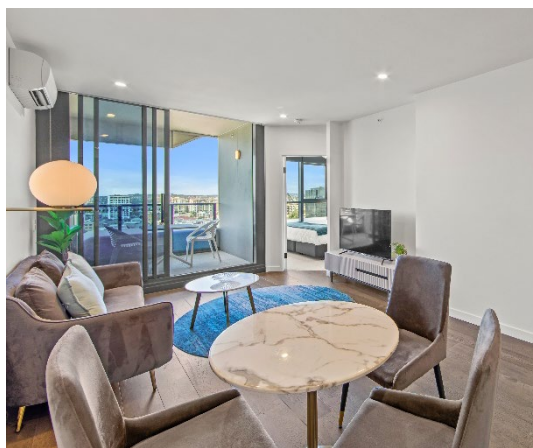
Note
External Building Name – Brisbane Casino Towers

Year Property was Built	2018
Year of Last Complete Guest Room Renovation	-
Number of Floors	30 Levels
Property Location	Brisbane South Bank
Nearest Major Airport 3-letter Code	BNE

GDS Codes | Chain Code – GD

Amadeus	Galileo	Sabre	Worldspan
BNEAOH	F7329	381243	BNEAO





Urban lifestyle destination, few steps away from Brisbane CBD **Fortitude Valley Apartments** is ideal for both leisure and business travellers. Brisbane's most colourful inner-city neighbourhood, Fortitude Valley, offers travellers a refined sanctuary to kick back and relax. Ideal for both leisure and business travellers, Fortitude Valley is just 1.5km away from the Brisbane CBD.

Hotel Features

- Complimentary Wi-Fi
- Undercover Parking
- Outdoor Swimming Pool
- Beautiful City / Mountain Views

Apartment Features

- Spacious 1 & 2-Bedroom Apartments
- Full Kitchen
- Laundry Facilities
- Air Conditioned
- Lounge and Dining Area
- Private Balcony

Location

- 300-450m The Fortitude Music Hall and China Town
- 1km to RNA Showgrounds and James Street Market
- 1.5km to Queen St Mall and Howard Smith Wharves
- 2km to Royal Brisbane and Women's Hospital
- 3km to Suncorp Stadium

[Click Here for Hotel Information](#)

Fortitude Valley Apartments by CLLIX
 107 Alfred Street, Fortitude Valley, QLD 4006
 Sales: (07) 3518 4111 | E: sales@cllix.com
 Corporate Reservations: (07) 3051 0059 | E: corporate.res@cllix.com

Hotel Features	Yes	No	Comments
Self-serve Kiosk	★		
Reception Hours	★		Mon – Fri, 8AM-5PM. Sat- Sun, 9AM- 4PM
Swimming Pool	★		Level 27, 6AM-9PM
Steam Room		★	
Spa		★	
Sauna		★	
Gymnasium		★	
Undercover Carpark	★		1 Complimentary Car Space if Booked Direct*
Business Facilities		★	
Conference/ Meeting room		★	
Housekeeping	★		Daily for 1-6 Night Stays.* Weekly for 7+ Nights Stays
Multilingual Staff		★	
Onsite ATM		★	
All Major Credit Cards Accepted	★		Mastercard, Visa (1.5% services), Amex & Diners (3% services)
Cash Security Deposit		★	
Internet / Wi-Fi	★		

*Exclusive for negotiated contracted corporate accounts.

Note

Kindly provide your contact phone and email address to our reservations agent prior to your arrival so we can provide you with check in instructions for access to the front door and self serve check in kiosk. Please call 07 3518 4108 to provide these details.

Apartment Features	Yes	No	Comments
Lounge and Dining Area	★		
Spa		★	
Private Balcony	★		
Smoking on Property		★	
Outdoor Furniture	★		
Air Conditioning	★		Living Area only for 1 Bedroom Apartments
Ceiling Fan	★	★	Only in 1 Bedroom Apartments
Keycard Room Access		★	
In-room Safe		★	
Mini Bar		★	
Direct Dial Phones		★	
International Power Converters		★	
AM/FM Radio Alarm Clock		★	
Hairdryer & Toiletries	★		
Private Bathroom	★		
Kitchen Facilities	Oven, Cooktop, Fridge, Microwave, Tea/Coffee Facilities, Pot, Pans, Plates, Glassware, Silverware		
Laundry Facilities	Washing Machine, Dryer, Iron, and Ironing Board		

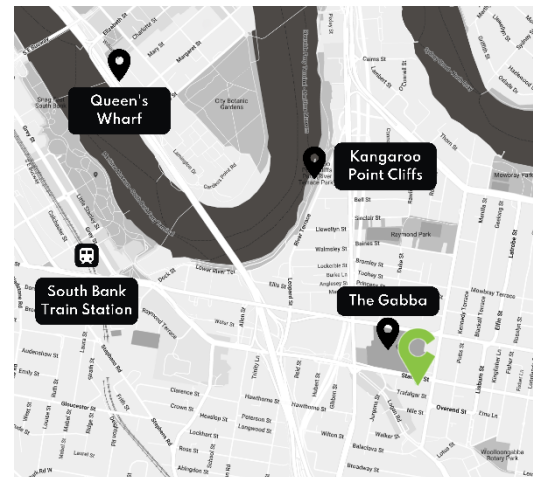
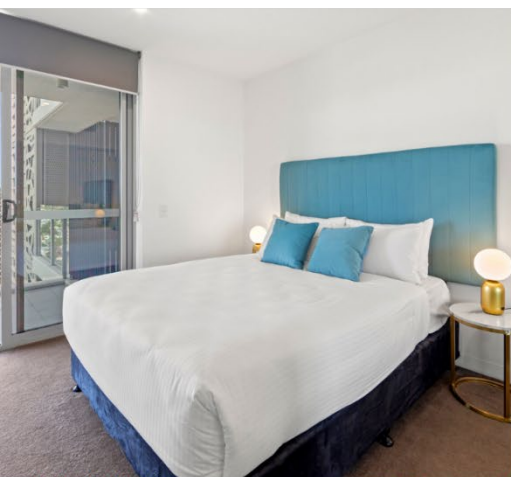
Year Property was Built	2020
Year of Last Complete Guest Room Renovation	-
Number of Floors	2 Towers, 27 Levels
Property Location	Fortitude Valley
Nearest Major Airport 3-letter Code	BNE

GDS Codes | Chain Code – GD

Amadeus	Galileo	Sabre	Worldspan
BNEFVY	H9180	285061	BNEFV



Trafalgar Lane Apartments



Trafalgar Lane Apartments by CLLIX, located across from Brisbane's iconic Gabba Stadium, offer easy access to top shopping, dining, and events. Enjoy stunning city views, nearby South Bank attractions, and Woolloongabba's vibrant cafés and boutiques. With excellent transport links, including the Woolloongabba Bus Station and CBD proximity, it's the ideal spot to experience Brisbane's culture, convenience, and lifestyle—all in one place.

Hotel Features

- Fully Equipped Gym
- Swimming Pool
- Rooftop Garden with BBQ Facilities
- Spa, Steams & Sauna Rooms
- Cinema Room
- Residents Lounge

Apartment Features

- Spacious 1, 2 & 3-Bedroom Apartments
- Air Conditioned
- Soundproof Units
- Fully Furnished Full Kitchen with a Dishwasher
- Laundry Facilities

Location

- The Gabba Cricket Ground
- Mater Hospital
- Princess Alexandra Hospital
- Cross River Rail
- Kangaroo Point Cliffs
- South Bank Parklands
- M1 motorway

[Click Here for Hotel Information](#)

Trafalgar Lane Apartments By CLLIX

855 Stanley Street, Woolloongabba QLD 4102, Australia | (07) 351 84120

Sales: (07) 3518 4111 | E: sales@cllix.com

Corporate Reservations: (07) 3051 0059 | E: corporate.res@cllix.com

Hotel Features	Yes	No	Comments
Reception Hours	★		Self-check in from 2pm
Swimming Pool	★		Level 6, 6AM-10PM
Steam Room	★		Level 6 6AM -10PM
Spa	★		Level 6 6AM -10PM
Sauna	★		Level 6 6AM -10PM
Gymnasium	★		Level 6 6AM -10PM
Undercover Carpark	★		Parking at 28 Trafalgar St. 1 Complimentary Car Space if Booked Direct*
Business Facilities		★	
Conference/ Meeting room		★	
Housekeeping	★		Daily for 1-6 Night Stays. * Weekly for 7+ Nights Stays
Multilingual Staff		★	
Onsite ATM		★	
All Major Credit Cards Accepted	★		Mastercard & Visa (1.7% service fee) American Express (3% service fee)
Cash Security Deposit		★	
Internet / Wi-Fi	★		

*Exclusive for negotiated contracted corporate accounts.

Apartment Features	Yes	No	Comments
Lounge and Dining Area	★		
Spa		★	
Private Balcony	★		In some rooms
Smoking on Property		★	
Outdoor Furniture	★		
Air Conditioning	★		
Ceiling Fan	★		
Keycard Room Access		★	
In-room Safe		★	
Mini Bar		★	
Direct Dial Phones		★	
International Power Converters		★	
AM/FM Radio Alarm Clock		★	
Hairdryer & Toiletries	★		
Private Bathroom	★		
Kitchen Facilities	Full Kitchen, Dishwasher, Electric Kettle, Tea and Coffee		
Laundry Facilities	Washing Machine, Dryer		

Year Property was Built	2016
Year of Last Complete Guest Room Renovation	-
Number of Floors	20
Property Location	Woolloongabba, QLD
Nearest Major Airport 3-letter Code	BNE

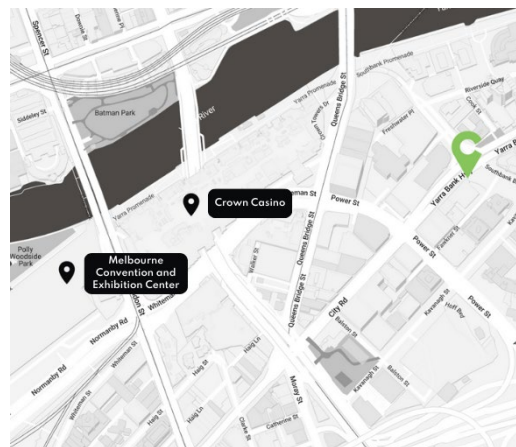
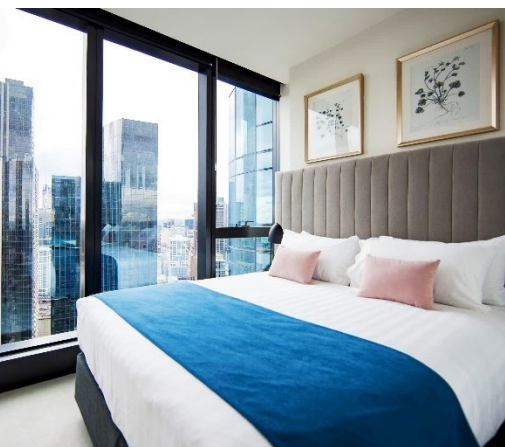
GDS Codes | Chain Code – GD

Amadeus	Galileo	Sabre	Worldspan	DHISCO
BNETFL	DI460	614667	10579	95366



CLLIX AUSTRALIA 108

APARTMENTS



Just a 3-min walk from the Crown Entertainment Complex, **CLLIX Australia 108 Apartments** serviced apartments in Melbourne is surrounded by Southbank's best dining, arts, and entertainment precincts, offering a large array of exclusive recreation facilities. Making memories of Melbourne will be easy.

Hotel Features

- Complimentary Wi-Fi
- Spectacular City Views
- Australia's tallest tower

Apartment Features

- Spacious 1 & 2-Bedroom Apartments
- Full Kitchen
- Laundry Facilities
- Air Conditioned

Location

- 190m to Southbank Restaurant and Bars
- 450m to Crown Casino
- 600m to Arts Centre Melbourne
- 850m to Federation Square • 900m to Melbourne CBD
- 1.4km to Melbourne Convention & Exhibition Centre
- 1.5km to Rod Laver Arena

[Click Here for Hotel Information](#)

CLLIX Australia 108 Apartments
70 Southbank Boulevard, Southbank, Melbourne 3006
Sales: (07) 3518 4111 | E: sales@cllix.com
Corporate Reservations: (07) 3051 0059 | E: corporate.res@cllix.com

Reception Office

Location: Shop 5, 89 City Road, Southbank 3006.

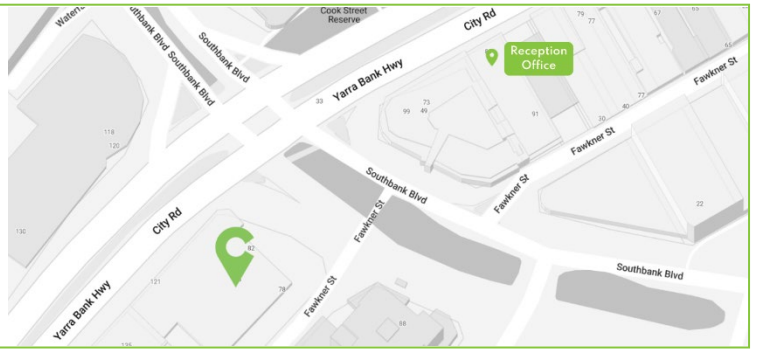
Hours: Monday- Friday: 9AM-10PM

Saturday: 9AM-9PM

Sunday & Public Holidays: 9AM-7PM

Contact No.: (03) 8638 0338

Kindly give your contact information to our reservation agent prior to your arrival. (07) 3518 4108



Hotel Features	Yes	No	Comments
Undercover Carpark	★		Limited Parking. Pre-Booking \$60 AUD
Business Facilities		★	
Conference/ Meeting room		★	
Housekeeping	★		Daily for 1-6 Night Stays.* Weekly for 7+ Nights Stays
Multilingual Staff		★	
Onsite ATM		★	
All Major Credit Cards Accepted	★		Mastercard, Visa (1.5% services), Amex & Diners (3% services)
Cash Security Deposit		★	
Internet / Wi-Fi	★		
Leisure Facilities		★	not available to CLLIX guests

*Exclusive for negotiated contracted corporate accounts.

Apartment Features	Yes	No	Comments
Lounge and Dining Area	★		
Spa		★	
Private Balcony		★	
Smoking on Property		★	
Outdoor Furniture	★		
Air Conditioning	★		
Ceiling Fan		★	
Keycard Room Access		★	
In-room Safe		★	
Mini Bar		★	
Direct Dial Phones		★	
International Power Converters		★	
AM/FM Radio Alarm Clock		★	
Hairdryer & Toiletries	★		
Private Bathroom	★		
Kitchen Facilities	Oven, Cooktop, Fridge, Microwave, Tea/Coffee Facilities, Pot, Pans, Plates, Glassware, Silverware		
Laundry Facilities	Washing Machine, Dryer, Iron, and Ironing Board		

Year Property was Built	2020
Year of Last Complete Guest Room Renovation	-
Number of Floors	101 Levels
Property Location	Melbourne Southbank
Nearest Major Airport 3-letter Code	MEL

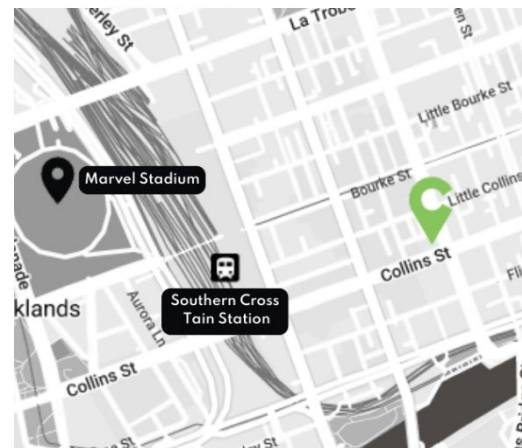
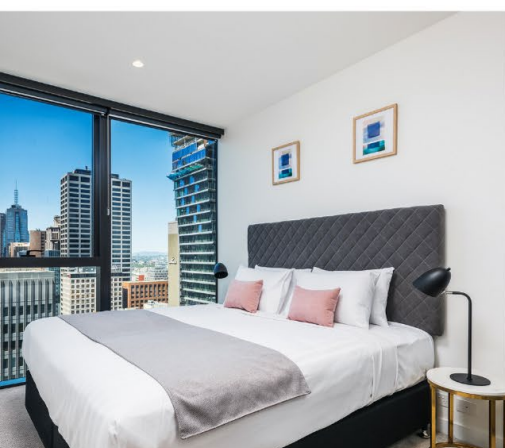
GDS Codes | Chain Code – GD

Amadeus	Galileo	Sabre	Worldspan
MELAU	F6792	345931	MELAT



COLLINS HOUSE

MELBOURNE



Discover Melbourne's luxury, innovation, and sheer beauty at **Collins House Apartments**. Offers contemporary 1- and 2-Bedroom Apartments in Melbourne, amidst the heart of the CBD, with just a short walk to the city's entertainment, sporting, and business centres.

Hotel Features

- Complimentary Wi-Fi
- Fully Equipped Gym
- Stunning City Views
- Barbeque Terrace

Apartment Features

- Spacious 1 & 2-Bedroom Apartments
- Full Kitchen
- Laundry Facilities
- Air Conditioned
- Lounge and Dining Area

Location

- Central CBD location
- 750m to Crown Casino
- 1km to Southbank Restaurant and Bars
- 1.2km to Federation Square
- 1.3km to Arts Melbourne Centre
- 1.3km to Melbourne Convention & Exhibition Centre
- 2km to Rod Laver Arena

[Click Here for Hotel Information](#)

Collins House Apartments by CLLIX
464 Collins St, Melbourne VIC 3000
Sales: (07) 3518 4111 | E: sales@cllix.com
Corporate Reservations: (07) 3051 0059 | E: corporate.res@cllix.com

Hotel Features	Yes	No	Comments
Reception Hours	★		Mon - Fri, 7AM-1AM. Sat- Sun, 8AM-12AM
Swimming Pool		★	
Steam Room		★	
Spa		★	
Sauna		★	
Gymnasium	★		Level 27, 7AM-10PM
Undercover Carpark		★	
Business Facilities		★	
Conference/ Meeting room	★		Prebooked through Reception
Housekeeping	★		Daily for 1-6 Night Stays.* Weekly for 7+ Nights Stays
Multilingual Staff		★	
Onsite ATM		★	
All Major Credit Cards Accepted	★		Mastercard, Visa (1.5% services), Amex & Diners (3% services)
Cash Security Deposit		★	
Internet / Wi-Fi	★		

**Exclusive for negotiated contracted corporate accounts.*

Note:

The front of our building has historical design. For security reasons, you may need to call the reception for access.

Contact No.: 0473 487 464

Kindly give your contact information to our reservation agent prior to your arrival. (07) 3518 4108

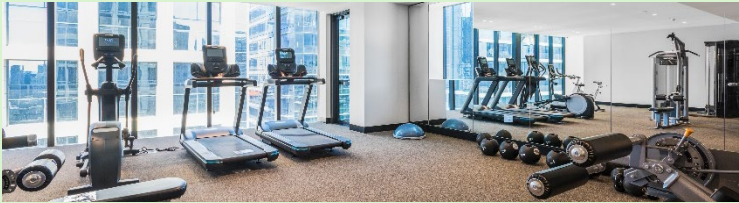
Apartment Features	Yes	No	Comments
Lounge and Dining Area	★		
Spa		★	
Private Balcony		★	
Smoking on Property		★	
Outdoor Furniture		★	
Air Conditioning	★		
Ceiling Fan		★	
Keycard Room Access		★	
In-room Safe		★	
Mini Bar		★	
Direct Dial Phones		★	
International Power Converters		★	
AM/FM Radio Alarm Clock		★	
Hairdryer & Toiletries	★		
Private Bathroom	★		
Kitchen Facilities	Oven, Cooktop, Fridge, Microwave, Tea/Coffee Facilities, Pot, Pans, Plates, Glassware, Silverware		
Laundry Facilities	Washing Machine, Dryer, Iron, and Ironing Board		



Year Property was Built	2019
Year of Last Complete Guest Room Renovation	-
Number of Floors	56 Levels
Property Location	Melbourne CBD
Nearest Major Airport 3-letter Code	MEL

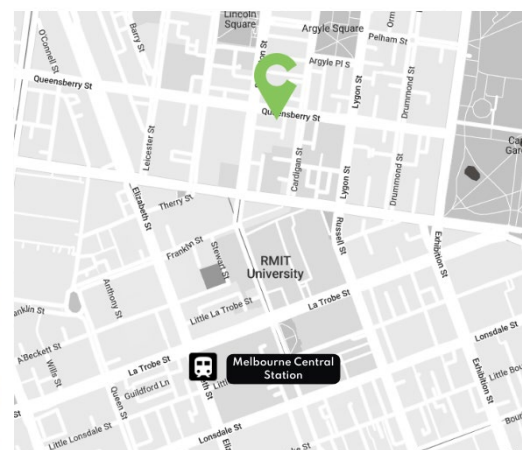
GDS Codes | Chain Code – GD

Amadeus	Galileo	Sabre	Worldspan
MELACH	G1034	388370	MELCS



THE EMINENCE

CARLTON



The Eminence Apartments is ideally placed for both business and leisure travellers. A 3-min walk to Melbourne's famous Lygon Street where you can find Melbourne's famous Italian eateries, restaurants, bakehouses, and ultrahip cafes. At The Eminence enjoy the picturesque rooftop deck with barbeque facilities.

Hotel Features

- Complimentary Wi-Fi
- Picturesque roof-top terrace
- Barbeque facilities

Apartment Features

- Spacious 1 & 2-Bedroom Apartments
- Full Kitchen • Laundry Facilities
- Air Conditioned
- Lounge and Dining Area

Location

- 300m to Lincoln Square
- 500m to Old Melbourne Gaol
- 550m to Carlton Gardens
- 700m to State Library
- 750m to Woolworths & Queen Victoria Market
- 1-2km to Melbourne CBD and Flagstaff Gardens

[Click Here for Hotel Information](#)

The Eminence Apartments by CLLIX
145 Queensberry Street, Carlton VIC 3053
Sales: (07) 3518 4111 | E: sales@cllix.com
Corporate Reservations: (07) 3051 0059 | E: corporate.res@cllix.com

Hotel Features	Yes	No	Comments
Reception Hours	★	Mon– Sat, 9AM- 5PM. Sun, 9AM- 3PM. After Hours Check-in contact 0488 660 857	
Swimming Pool		★	
Steam Room		★	
Spa		★	
Sauna		★	
Gymnasium		★	
Undercover Carpark		★	
Business Facilities		★	
Conference/ Meeting room		★	
Housekeeping	★		Daily for 1-6 Night Stays.* Weekly for 7+ Nights Stays
Multilingual Staff		★	
Onsite ATM		★	
All Major Credit Cards Accepted	★		Mastercard, Visa (1.5% services), Amex & Diners (3% services)
Cash Security Deposit		★	
Internet / Wi-Fi	★		

*Exclusive for negotiated contracted corporate accounts.

Apartment Features	Yes	No	Comments
Lounge and Dining Area	★		
Spa		★	
Private Balcony	★		
Smoking on Property		★	
Outdoor Furniture		★	
Air Conditioning	★		
Ceiling Fan		★	
Keycard Room Access		★	
In-room Safe		★	
Mini Bar		★	
Direct Dial Phones		★	
International Power Converters		★	
AM/FM Radio Alarm Clock		★	
Hairdryer & Toiletries	★		
Private Bathroom	★		
Kitchen Facilities	Oven, Cooktop, Fridge, Microwave, Tea/Coffee Facilities, Pot, Pans, Plates, Glassware, Silverware		
Laundry Facilities	Washing Machine, Dryer, Iron, and Ironing Board		

Note

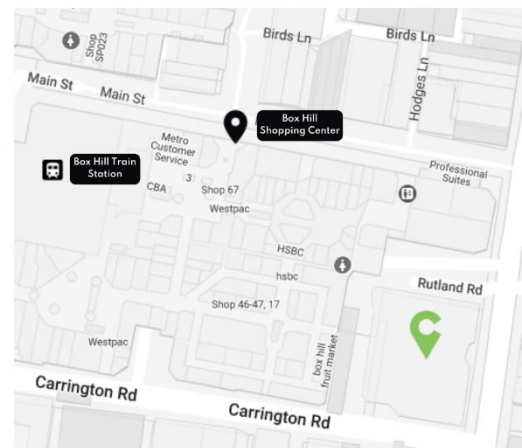
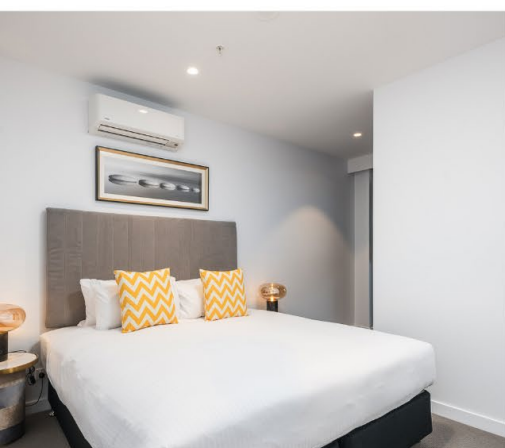
Kindly give your contact information to our reservation agent prior to your arrival. (07) 3518 4108

Year Property was Built	2017
Year of Last Complete Guest Room Renovation	-
Number of Floors	56 Levels
Property Location	Carlton (Queensberry St, Close to Swanston St)
Nearest Major Airport 3-letter Code	MEL

GDS Codes | Chain Code – GD

Amadeus	Galileo	Sabre	Worldspan
MELACH	G1034	388370	MELCS





With a relaxed and tranquil ambiance, **Sky One Apartments** in Melbourne offer world-class amenities and spectacular views of Melbourne's CBD and surrounding suburbs. Experience a high-end lifestyle in our luxurious 1, 2, or 3-Bedroom Apartment, perfect for your next escape.

Hotel Features

- Complimentary Wi-Fi
- Fully Equipped Gym
- Indoor Heated Swimming Pool
- Heated Spa
- Sauna
- Steam Room
- Barbeque Facilities
- East of the CBD Location

Apartment Features

- Spacious 1, 2 & 3-Bedroom Apartments
- Full Kitchen
- Laundry Facilities
- Air Conditioned
- Lounge and Dining Area
- Spectacular Views
- Private Balcony

Location

- A short walk to Box Hill's best restaurants, cafes, bars, shopping, and entertainment.
- 2-5 min walk to the train station, taxi rank, and bus station.

[Click Here for Hotel Information](#)

Sky One Apartments by CLIX
 545 Station St, Box hill, VIC 3128
 Sales: (07) 3518 4111 | E: sales@clix.com
 Corporate Reservations: (07) 3051 0059 | E: corporate.res@clix.com

Hotel Features	Yes	No	Comments
Reception Hours	★		Mon – Fri, 7AM-10PM. Sat - Sun, 9AM-5:30PM
Swimming Pool	★		Level 3 7 AM - 10 PM
Steam Room	★		Level 3 7 AM - 10 PM
Spa	★		Level 3 7 AM - 10 PM
Sauna	★		Level 3 7 AM - 10 PM
Gymnasium	★		Level 3 7 AM - 10 PM
Undercover Carpark	★		Prebooked through Reception \$20 per night
Business Facilities		★	
Conference/ Meeting room	★		Club Lounge and Theatre
Housekeeping	★		Daily for 1-6 Night Stays.* Weekly for 7+ Nights Stays
Multilingual Staff		★	
Onsite ATM		★	
All Major Credit Cards Accepted	★		Mastercard, Visa (1.5% services), Amex & Diners (3% services)
Cash Security Deposit		★	
Internet / Wi-Fi	★		

*Exclusive for negotiated contracted corporate accounts.

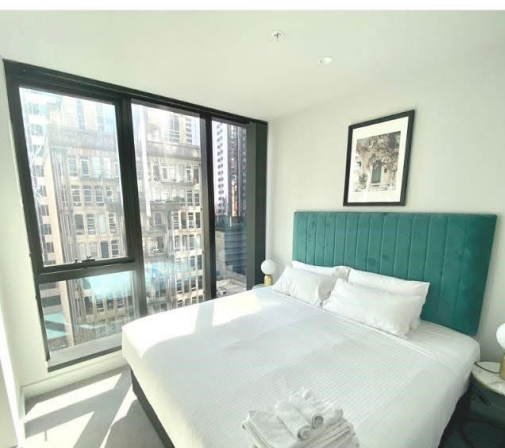
Apartment Features	Yes	No	Comments
Lounge and Dining Area	★		
Spa	★		
Private Balcony	★		
Smoking on Property		★	
Outdoor Furniture	★		
Air Conditioning	★		
Ceiling Fan		★	
Keycard Room Access		★	
In-room Safe		★	
Mini Bar		★	
Direct Dial Phones		★	
International Power Converters		★	
AM/FM Radio Alarm Clock		★	
Hairdryer & Toiletries	★		
Private Bathroom	★		
Kitchen Facilities	Oven, Cooktop, Fridge, Microwave, Tea/Coffee Facilities, Pot, Pans, Plates, Glassware, Silverware		
Laundry Facilities	Washing Machine, Dryer, Iron, and Ironing Board		

Year Property was Built	2019
Year of Last Complete Guest Room Renovation	-
Number of Floors	35
Property Location	East of the CBD
Nearest Major Airport 3-letter Code	MEL

GDS Codes | Chain Code – GD

Amadeus	Galileo	Sabre	Worldspan
MELASB	F9717	386621	MELAS





Paragon Apartments boasts of ultimate boutique Apartments in the heart of CBD available in self-contained 1 and 2, -Bedrooms. The luxury amenities include a fully equipped gym, swimming pool, and sauna presenting a hub for rejuvenation and relaxation.

Hotel Features

- Complimentary Wi-Fi
- Fully Equipped Gym
- Heated Swimming pool
- Sauna
- Library
- Garden
- Dining & Lounge Area
- Undercover Parking

Apartment Features

- Spacious 1 & 2 Bedroom Apartments
- Full Kitchen
- Laundry Facilities
- Air Conditioned

Location

- Central CBD location
- 1km to Southbank Restaurant and Bars
- 2km to Crown Casino
- 2km to Federation Square
- 2km to Arts Melbourne Centre
- 2.5km to Melbourne Convention & Exhibition Centre
- 2.5km to Rod Laver Arena

[Click Here for Hotel Information](#)

Paragon Apartments by CLLIX
 318 Queen St, Melbourne VIC 3000, Australia
 Sales: (07) 3518 4111 | E: sales@cllix.com
 Corporate Reservations: (07) 3051 0059 | E: corporate.res@cllix.com

Hotel Features	Yes	No	Comments
Reception Hours	★		Mon – Fri, 7AM-10:30PM. Sat - Sun, 8AM-4PM
Swimming Pool	★		Level 7, 7 AM - 10 PM
Steam Room	★		Level 7, 7 AM - 10 PM
Spa	★		Level 7, 7 AM - 10 PM
Sauna	★		Level 7, 7 AM - 10 PM
Gymnasium	★		Level 7, 7 AM - 10 PM
Library	★		Level 5, 7 AM - 10 PM
Undercover Carpark		★	
Business Facilities		★	
Conference/ Meeting room	★		Theatre and Lounge Available for Booking
Housekeeping	★		Daily for 1-6 Night Stays.* Weekly for 7+ Nights Stays
Multilingual Staff		★	
Onsite ATM		★	
All Major Credit Cards Accepted	★		Mastercard, Visa (1.5% services), Amex & Diners (3% services)
Cash Security Deposit		★	
Internet / Wi-Fi	★		

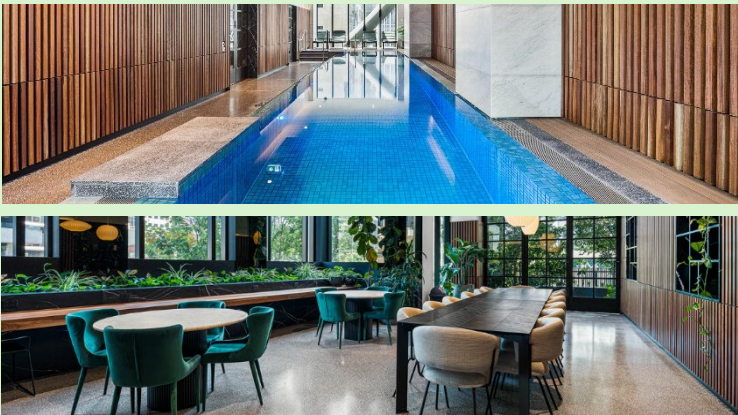
**Exclusive for negotiated contracted corporate accounts.*

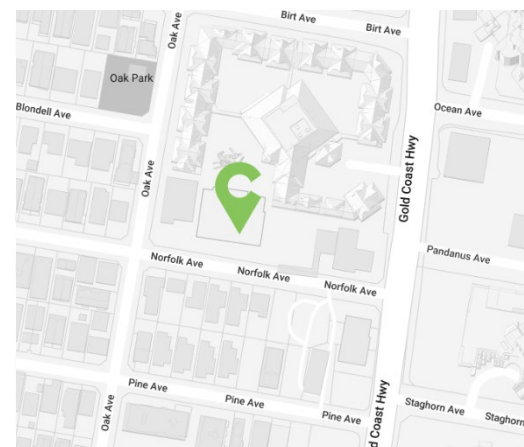
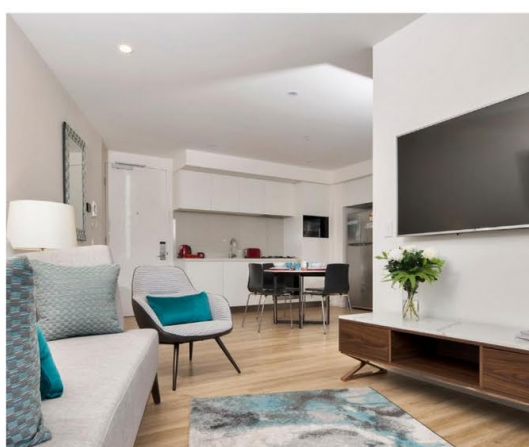
Apartment Features	Yes	No	Comments
Lounge and Dining Area	★		
Spa		★	
Private Balcony		★	
Smoking on Property		★	
Outdoor Furniture		★	
Air Conditioning	★		
Ceiling Fan		★	
Keycard Room Access		★	
In-room Safe		★	
Mini Bar		★	
Direct Dial Phones		★	
International Power Converters		★	
AM/FM Radio Alarm Clock		★	
Hairdryer & Toiletries	★		
Private Bathroom	★		
Kitchen Facilities	Oven, Cooktop, Fridge, Microwave, Tea/Coffee Facilities, Pot, Pans, Plates, Glassware, Silverware		
Laundry Facilities	Washing Machine, Dryer, Iron, and Ironing Board		

Year Property was Built	2022
Year of Last Complete Guest Room Renovation	-
Number of Floors	48
Property Location	Melbourne CBD
Nearest Major Airport 3-letter Code	MEL

GDS Codes | Chain Code – GD

Amadeus	Galileo	Sabre	Worldspan
MELPCL	H8932	604173	MELPA





Ruby Gold Coast, an escape to an oasis in our serviced 1, 2, 3-bedroom apartments and villas in the Gold Coast where beach-inspired living, modern decor, and a choice between apartments or villas boasting sublime views of the city, hinterland, or ocean awaits.

Hotel Features

- Complimentary Wi-Fi
- Fully Equipped 24hr Gym
- Resort Style Outdoor Heated Swimming Pool
- Sauna
- Steam Room
- Barbeque Facilities
- Family-Friendly

Apartment Features

- Spacious 1,2, 3-Bedroom Apartments & Villas
- Full Kitchen
- Laundry Facilities
- Air Conditioned
- Lounge and Dining Area
- Spectacular Views
- Private Balcony

Location

- Surfers Paradise
- A short walk to Gold Coast's best restaurants, cafes, bars, shopping, and entertainment.
- A short walk to Gold Coast Light Rail.

[Click Here for Hotel Information](#)

Ruby Gold Coast by CLLIX
 9 Norfolk Avenue, Surfers Paradise, Queensland, 4217, Australia
 Sales: (07) 3518 4111 | E: sales@cllix.com
 Corporate Reservations: (07) 3051 0059 | E: corporate.res@cllix.com

Hotel Features	Yes	No	Comments
Reception Hours	★	Mon – Fri, 8AM- 5PM. Sat - Sun, 8AM- 8PM. After Hours Check-in call 0405 525 453	
Swimming Pool	★		Ground Level, 7AM- 9AM
Steam Room		★	As of July 8, 2024, the gym, sauna, and steam room are closed due to maintenance until further notice
Sauna		★	
Gymnasium	★		Level 2, 06:00 AM to 10:00 PM
Library		★	
Undercover Carpark	★		1 Complimentary Car Space if Booked Direct*
Business Facilities		★	
Conference/ Meeting room		★	
Housekeeping	★		Daily for 1-6 Night Stays.* Weekly for 7+ Nights Stays
Multilingual Staff		★	
Onsite ATM		★	
All Major Credit Cards Accepted	★		Mastercard, Visa (1.5% services), Amex & Diners (3% services)
Cash Security Deposit		★	
Internet / Wi-Fi	★		
Onsite Restaurant Café	★		Okey Dokey Café. 7AM- 2:30PM

**Exclusive for negotiated contracted corporate accounts.*

Apartment Features	Yes	No	Comments
Lounge and Dining Area	★		
Spa		★	
Private Balcony	★		
Smoking on Property		★	
Outdoor Furniture	★		
Air Conditioning	★		
Ceiling Fan		★	
Keycard Room Access		★	
In-room Safe		★	
Mini Bar		★	
Direct Dial Phones		★	
International Power Converters		★	
AM/FM Radio Alarm Clock		★	
Hairdryer & Toiletries	★		
Private Bathroom	★		
Kitchen Facilities	Oven, Cooktop, Fridge, Microwave, Tea/Coffee Facilities, Pot, Pans, Plates, Glassware, Silverware		
Laundry Facilities	Washing Machine, Dryer, Iron, and Ironing Board		

Year Property was Built	2019
Year of Last Complete Guest Room Renovation	-
Number of Floors	30
Property Location	Surfers Paradise
Nearest Major Airport 3-letter Code	OOL

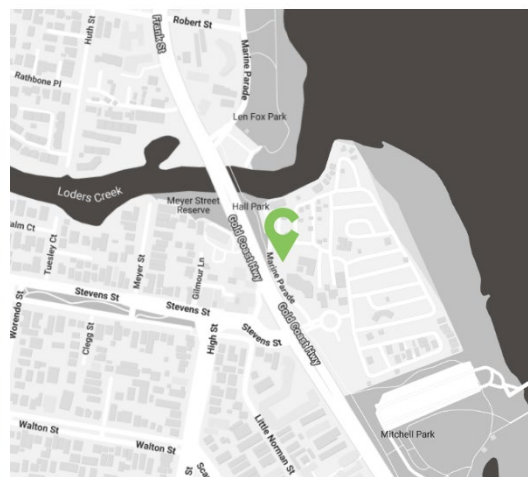
GDS Codes | Chain Code – GD

Amadeus	Galileo	Sabre	Worldspan
SFPARI	H8933	387597	OOLRG





MARINE QUARTER



With breathtaking views of Marine Parade and the lush Broadwater Parklands, **Marine Quarter Apartments by CLLIX** offers a perfect blend of a tranquil environment and excitement. Its prime position allows guests to enjoy the beauty of the surrounding natural environment, making it a highly desirable place to stay.

Hotel Features

- Complimentary Wi-Fi
- Fully Equipped Gym
- Outdoor Swimming Pool
- BBQ Facilities

Apartment Features

- Spacious 1, 2 & 3-Bedroom Apartments
- Laundry Facilities
- Air Conditioned
- Fully Furnished
- Full Kitchen
- Private Balcony

Location

- Southport QLD
- Gold Coast Aquatic Center 1km
- Main Beach – “Main Surf Beach” 3.5km
- Harbour Town Shopping Center 4.7km
- Seaworld Gold Coast 5.2km

[Click Here for Hotel Information](#)

Marine Quarter Apartments By CLLIX
165 Marine Parade, Southport QLD 4215, Australia | (07) 354 45043
Sales: (07) 3518 4111 | E: sales@cllix.com
Corporate Reservations: (07) 3051 0059 | E: corporate.res@cllix.com

Hotel Features	Yes	No	Comments
Reception Hours		★	Self-Check-in advise phone number in reservation
Swimming Pool	★		Level 4, 7AM-9PM
Steam Room		★	
Spa		★	
Sauna		★	
Gymnasium	★		
Undercover Carpark	★		1 Complimentary Car Space if Booked Direct*
Business Facilities		★	
Conference/ Meeting room		★	
Housekeeping	★		Daily for 1-6 Night Stays. * Weekly for 7+ Nights Stays
Multilingual Staff		★	
Onsite ATM		★	
All Major Credit Cards Accepted	★		Mastercard & Visa (1.7% service fee)
Cash Security Deposit		★	
Internet / Wi-Fi	★		

*Exclusive for negotiated contracted corporate accounts.

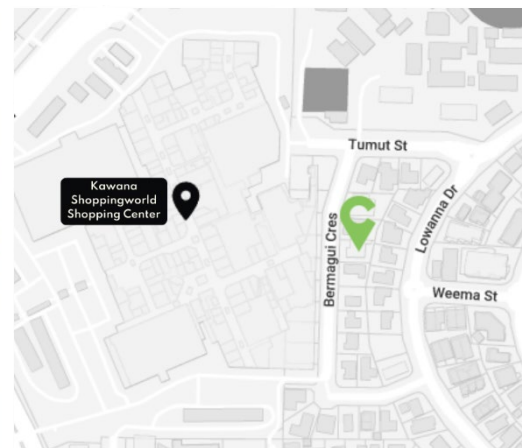
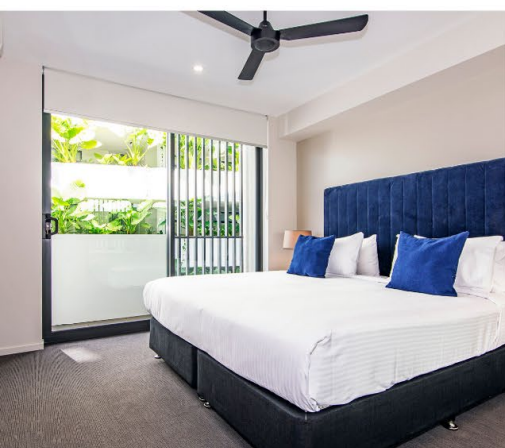
Apartment Features	Yes	No	Comments
Lounge and Dining Area	★		
Spa		★	
Private Balcony	★		
Smoking on Property		★	
Outdoor Furniture	★		
Air Conditioning	★		
Ceiling Fan	★		
Keycard Room Access		★	
In-room Safe		★	
Mini Bar		★	
Direct Dial Phones		★	
International Power Converters		★	
AM/FM Radio Alarm Clock		★	
Hairdryer & Toiletries	★		
Private Bathroom	★		
Kitchen Facilities	Oven, Cooktop, Fridge, Microwave, Dishwasher, Tea/Coffee Facilities, Crockery, Cuttlery & Cooking Utensils, Glassware, Ovenware, Pots & Pans.		
Laundry Facilities	Washing Machine, Dryer, Iron, and Ironing Board		

Year Property was Built	2024
Year of Last Complete Guest Room Renovation	-
Number of Floors	28
Property Location	Southport QLD
Nearest Major Airport 3-letter Code	OOL

GDS Codes | Chain Code – GD

Amadeus	Galileo	Sabre	Worldspan	DHISCO
OOLMA	DH690	614002	10418	49692





The Hedge Apartments brings a new level of style to Sunshine Coast. Relax in fully self-contained Sunshine Coast apartments while enjoying the beachside. Spend the day lazing by the pool or indulge in the many cafes and restaurants, just a short stroll away.

Hotel Features

- Complimentary Wi-Fi
- Commercial Aided Gym
- Resort Style Swimming Pool
- Beautiful ocean and hinterland views
- Undercover Parking

Apartment Features

- Spacious 1, 2 & 3-Bedroom Apartments
- Full Kitchen
- Laundry Facilities
- Air Conditioned
- Spectacular Views
- Private Balcony

Location

- 300 meters from Kawana Surf Club
- Within walking distance to Gold Class Cinemas, Medical Centres, Coles, Woolworths & Aldi, and over 150 Retail specialty shops, everything is within reach from The Hedge.

[Click Here for Hotel Information](#)

The Hedge Apartments by CLLIX
 5 Bermagui Cres Buddina Qld 4575
 Sales: (07) 3518 4111 | E: sales@cllix.com
 Corporate Reservations: (07) 3051 0059 | E: corporate.res@cllix.com

Hotel Features	Yes	No	Comments
Reception Hours	★		Mon – Fri, 9AM-5PM. After Hours Check-in call 0408 654 587
Swimming Pool	★		Ground Level, 6AM- 10AM
Steam Room		★	
Spa		★	
Sauna		★	
Gymnasium	★		Ground Level, 6AM- 10AM
Undercover Carpark	★		1 Complimentary Car Space if Booked Direct*
Business Facilities		★	
Conference/ Meeting room		★	
Housekeeping	★		Daily for 1-6 Night Stays.* Weekly for 7+ Nights Stays
Multilingual Staff		★	
Onsite ATM		★	
All Major Credit Cards Accepted	★		Mastercard, Visa (1.5% services), Amex & Diners (3% services)
Cash Security Deposit		★	
Internet / Wi-Fi	★		

**Exclusive for negotiated contracted corporate accounts.*

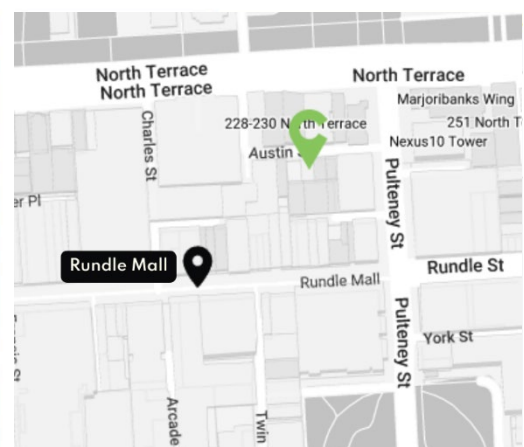
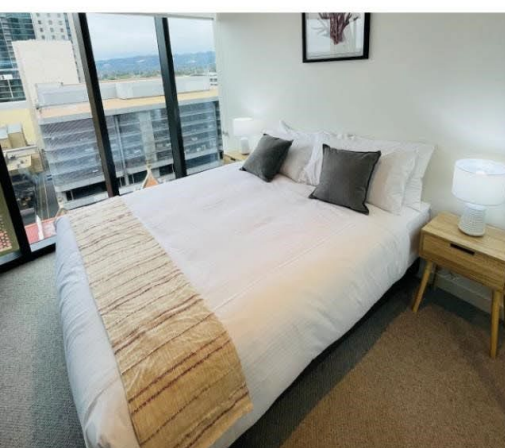
Apartment Features	Yes	No	Comments
Lounge and Dining Area	★		
Spa		★	
Private Balcony	★		
Smoking on Property		★	
Outdoor Furniture	★		
Air Conditioning	★		
Ceiling Fan		★	
Keycard Room Access		★	
In-room Safe		★	
Mini Bar		★	
Direct Dial Phones		★	
International Power Converters		★	
AM/FM Radio Alarm Clock		★	
Hairdryer & Toiletries	★		
Private Bathroom	★		
Kitchen Facilities	Oven, Cooktop, Fridge, Microwave, Tea/Coffee Facilities, Pot, Pans, Plates, Glassware, Silverware		
Laundry Facilities	Washing Machine, Dryer, Iron, and Ironing Board		





REALM

ADELAIDE



Located in the heart of CBD, **Realm Apartments** is very close to shopping, dining & entertainment precincts. Adelaide Zoo, Botanic Gardens, Adelaide Oval and public transport are within a short walk.

Hotel Features

- Complimentary Wi-Fi
- Fully Equipped Gym
- Undercover Parking

Apartment Features

- Spacious 1, 2 & 3-Bedroom Apartments
- Full Kitchen
- Laundry Facilities
- Air Conditioned
- Private Balcony

Location

- Adelaide CBD
- South Australian Museum 300m
- Rundle Mall 450m
- The University of Adelaide 270m
- Adelaide Oval 1.5km
- Adelaide Airport 7.5km.

[Click Here for Hotel Information](#)

Realm Apartments by CLLIX
15 –17 Austin Street, Adelaide SA5000
Sales: (07) 3518 4111 | E: sales@cllix.com
Corporate Reservations: (07) 3051 0059 | E: corporate.res@cllix.com

Hotel Features	Yes	No	Comments
Reception Hours	★		Mon – Thur, 8AM- 8PM. Fri - Sat, 8AM- 9PM
Swimming Pool		★	
Steam Room		★	
Spa		★	
Sauna		★	
Gymnasium	★		Level 8, 6AM- 10PM
Undercover Carpark	★		Charges Apply \$25.00 per night
Business Facilities		★	
Conference/ Meeting room		★	
Housekeeping	★		Daily for 1-6 Night Stays.* Weekly for 7+ Nights Stays
Multilingual Staff		★	
Onsite ATM		★	
All Major Credit Cards Accepted		★	
Cash Security Deposit		★	
Internet / Wi-Fi	★		

**Exclusive for negotiated contracted corporate accounts.*

Apartment Features	Yes	No	Comments
Lounge and Dining Area	★		
Spa		★	
Private Balcony	★		
Smoking on Property		★	
Outdoor Furniture	★		
Air Conditioning	★		
Ceiling Fan		★	
Keycard Room Access		★	
In-room Safe		★	
Mini Bar		★	
Direct Dial Phones		★	
International Power Converters		★	
AM/FM Radio Alarm Clock		★	
Hairdryer & Toiletries	★		
Private Bathroom	★		
Kitchen Facilities	Oven, Cooktop, Fridge, Microwave, Tea/Coffee Facilities, Pot, Pans, Plates, Glassware, Silverware		
Laundry Facilities	Washing Machine, Dryer, Iron, and Ironing Board		

Year Property was Built	2022
Year of Last Complete Guest Room Renovation	-
Number of Floors	39
Property Location	Adelaide SA
Nearest Major Airport 3-letter Code	

GDS Codes | Chain Code – GD

Amadeus	Galileo	Sabre	Worldspan
ADLREA	H8931	604174	ADLRE

